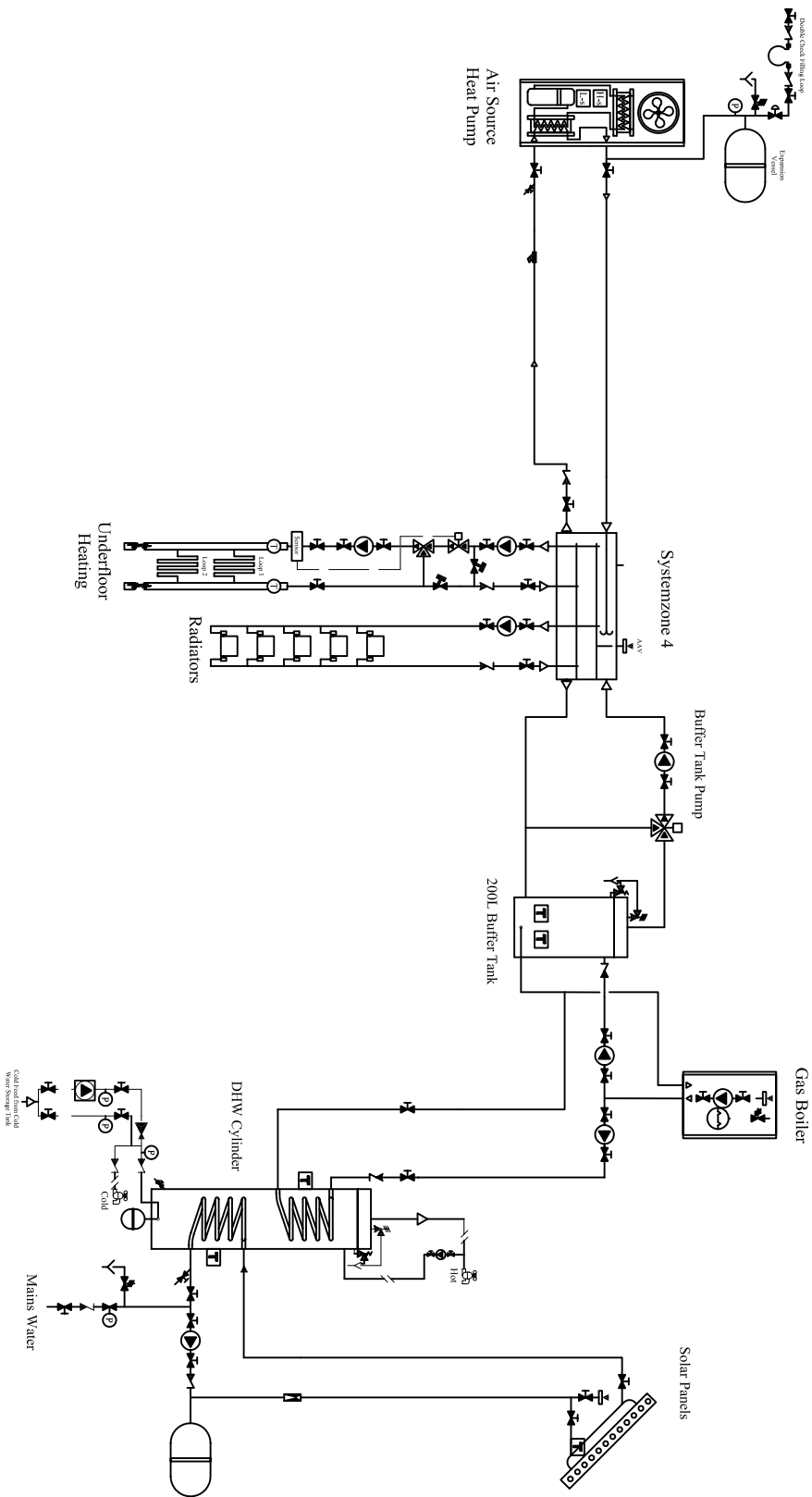


Information

Note
Non-return valves are required on SystemLink's outward zone flow pipe-work only when the zone to be piped is at a higher level than the SystemLink. In that situation, a non-return valve must be positioned in front of the zone pump. This will prevent the creation of a gravity fed, thermo-siphoning loop, which would cause continued supply of heated water to the radiators in that zone, even when the zone's pump is no longer required and has been switched off.

All components on the solar circuit, e.g. air vent and safety valve, must be suitably temperature rated for solar installation.



LEGEND

- | | | | | | |
|--|-----------------------|--|---------------------------|--|------------------------|
| | Motorised Valve | | Temperature Mixing Valve | | 3-Way Motorised Valve |
| | Isolating Valve | | Temperature Relief Valve | | Automatic Air Valve |
| | Safety Valve | | Pressure Regulating Valve | | Pressure Gauge |
| | Non Return Valve | | Flow Regulating Valve | | Temperature Gauge |
| | Pressure Relief Valve | | Pressure Reducing Valve | | Temperature Sensor |
| | | | Strainer | | DW Pressurisation Pump |
| | | | Drain Cock | | Circulating Pump |
| | | | Direction Arrow | | Hi-Pressure Switch |
| | | | Low Pressure Switch | | |

Example- SystemZone 4, Air to Water Heat Pump, Domestic Hot Water Cylinder, 1 Rad Zones, 1 Underfloor Heating Zone, Gas Boiler Backup (Bivalent Alternative)

SystemLink
C2 South City Business Centre,
Tallaght, Dublin 24
Tel: 00-353-(0)1 4031200
Fax: 00-353-(0)1 4137777
e:mail, info@systemlink.ie

Scale: NTS

Rev: 002

Drawn: AK

Date: 06-10-2008